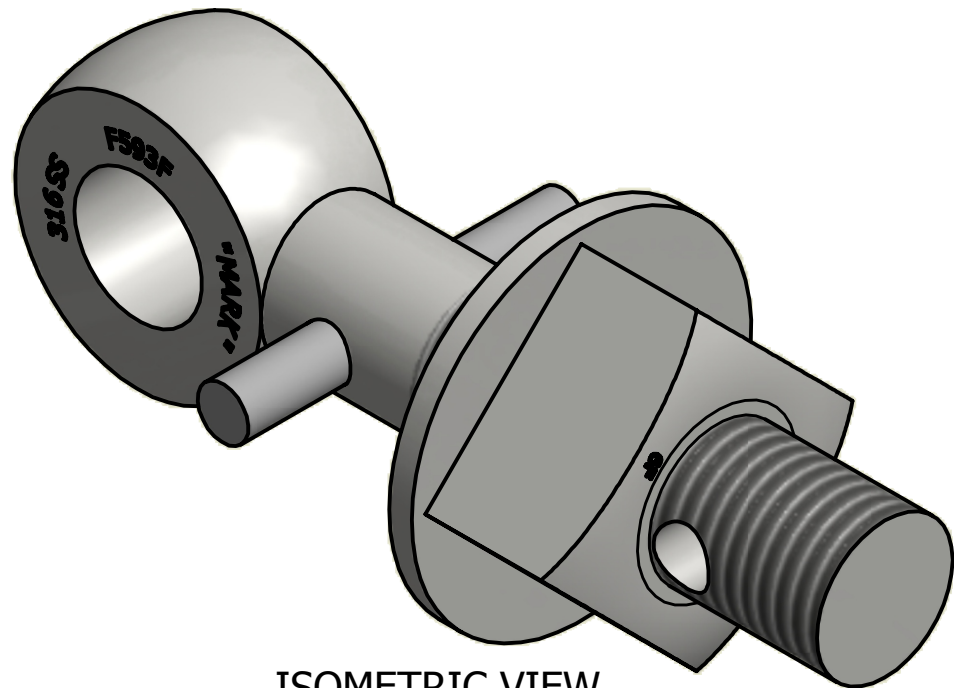
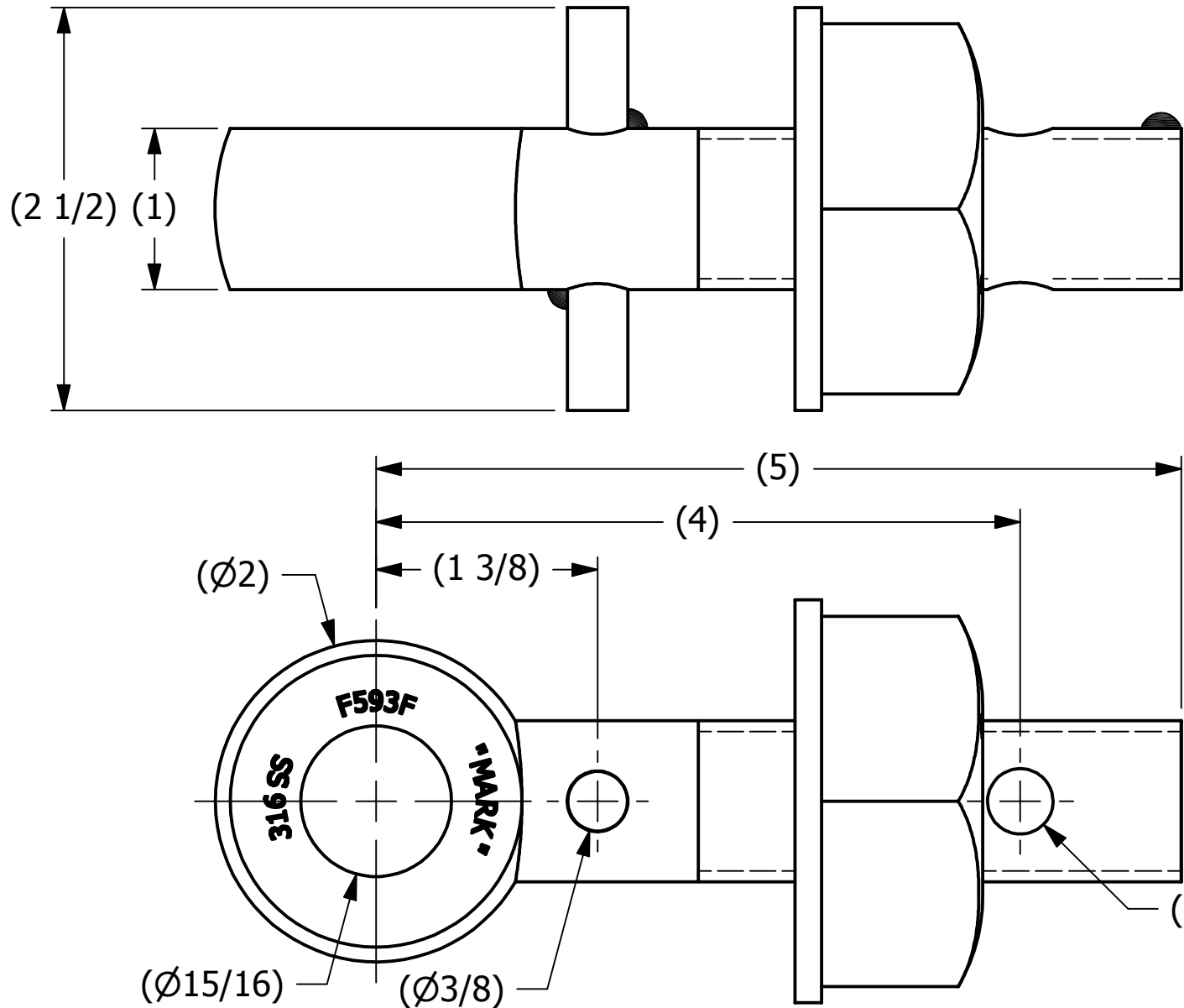


SALES DRAWING


SALES DRAWING



ISOMETRIC VIEW

C	CHL	6-27-07	REMOVED "W" FROM PART NUMBER
B	CHL	9-7-04	UPDATED TO 3D
A	FOD	3-15-99	UPDATED BOM, WASHER WAS WASH1S4
REV	BY	DATE	DESCRIPTION

UNLESS OTHERWISE SPECIFIED DIMENSIONAL TOLERANCES FRACTIONAL: $\pm 1/16$ X.XX: $\pm .03$ X.XXX: $\pm .015$ ANGULAR: $\pm 1^\circ$ DEBURR ALL SHARP EDGES. ALL MACHINED SURFACES TO HAVE A 125 RMS FINISH UNLESS NOTED OTHERWISE. THIRD ANGLE PROJECTION	DRAWN BY:	FOD
	CHECKED BY:	SAB
	PROTOTYPE BY:	FOD
	PROTOTYPE DATE:	3/9/1999
	APPROVED FOR PRODUCTION BY:	SAB
	PRODUCTION DATE:	3/9/1999

 <b>SALCO PRODUCTS, INC.</b>		
PART NAME: <b>EYEBOLT ASSEMBLY 1"X5"</b>		
MATERIAL: <b>STAINLESS STEEL</b>		
PROJECT #: <b>990304</b>	SHEET #: <b>1 OF 1</b>	SCALE: <b>1:1</b>
DRAWING #: <b>B13230</b>	PART #: <b>EB15HAS6P</b>	

THIS PRINT, PROPERTY OF SALCO PRODUCTS INC., CONTAINS PROPRIETARY INFORMATION AND MUST NOT BE COPIED, REPRODUCED, OR USED DETRIMENTALLY TO OUR INTEREST.